

Pinecreek February 2023

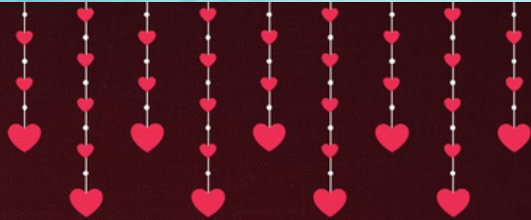
Issue 4

# Newsletter

Pine Creek Community Restoration  
Long-Term Recovery Organization



Together we are building the best community possible for the past, present and future residents and businesses in this Malden, Pine City and North Whitman County area.



*Happy Valentine's Day to  
our community members!*

The public is invited to  
LTRO monthly public  
Community Engagement  
Meetings held the 3rd  
Wednesday of each month,  
7pm at the Malden Town  
Hall @ 204 W Moreland  
Street. Meetings will be  
streamed via FB Live on  
our Facebook Page ~Pine  
Creek Community  
Restoration~

Please join us — we need  
resident input in our shared  
recovery.

## Resident Assistance

- Are you a fire survivor?
- Do you need recovery help?
- Do you know about the LTRO Assistance Program?

Find a simple request form at Town Hall, Food Bank, or Library, and the web at:  
<https://www.pinecreekcommunityrestoration.org/faq/>

## Total Residents helped with the Resident Assistant Program

~To date we have had a total of 21 received~  
requests.



FOR MORE VISIT: [www.pinecreekcommunityrestoration.org](http://www.pinecreekcommunityrestoration.org)

# RESOURCES

## UPPER COLUMBIA ACADAMY & PATHFINDERS WILL BE HERE IN MARCH

Upper Columbia  
Acadamy will be here  
March 12th.

Pathfinders March 20-  
24th.

Please sign up with our  
volunteer coordinator

John Lenz by  
contacting him at 509-  
254-1462

or Town Hall 509-569-  
3771 You can also leave  
your request in the  
town drop box.

The Wildfire Household Appliance and repair program deadline  
to apply 02/28/2023.

Max Grant of 2500.00 per household

Please see eligibility and criteria in the link provided.

### Wildfire Household Appliance and Repair Program (WHARP)

Formstack Form - Wildfire Household Appliance and Repair Program  
(WHARP)

### Whitman County Library Digital Navigator Project

- Digital skills and literacy training/tech support
- Broadband internet connection and the Affordable Connectivity Program
- Gifting laptops to households in need

More information can be found in the link  
below.

## Digital Navigation - Whitman County Library (whitcolib.org)

**Whitman County Library's annual Food for  
Fines drive begins Wednesday, February 1  
and continues through Tuesday, February  
28 at all 14 branch locations.**



# **Malden & Pine City Visit from WSU Students and Faculty**



**WSU Students were in town (Tuesday, January 31), from WSU's Landscape Architecture program in Malden and Pine City. As part of their capstone project, these students have been studying how fire, climate change, and adaptation can affect a community, and determining how to develop improved land-use planning designs. Students and faculty will be meeting with community members and leadership. They spent the morning in Malden, had lunch at the Community Church, and toured Pine City in the early afternoon.**



# Coming soon, Cell Tower in Malden, WA

Are you having problems with dropped calls, no signal... unable to make a call. The Town of Malden is working with State Agencies and Verizon to bring the long-awaited cell tower to working order.

